

DETAILS

| | |
|------------------------|---------------------|
| Product Number | C12763_FLARE-MINI-A |
| Family | Flare |
| Type | Lens |
| Color | clear |
| Diameter | 16 mm |
| Height | 8,6 mm |
| Style | round |
| Optic Material | PMMA |
| Holder Material | |
| Fastening | glue |
| Status | production ready |
| ROHS Compliant | Yes |
| Date Updated | 25/09/2015 |

OPTICAL PROPERTIES

| LED | Viewing | Light | Efficiency | cd/lm | Connector |
|-----------------|------------|-------|------------|------------|-----------|
| | Angle | Beam | | | |
| XP-E | 95+17 deg | Oval | 95 % | 1.600 | - |
| XB-D | 95+16 deg | Oval | 95 % | 1.300 | - |
| XP-G | 99+21 deg | Oval | 95 % | 1.070 | - |
| XT-E | 95+19 deg | Oval | 94 % | 1.200 | - |
| XP-E2 | 94+16 deg | Oval | 94 % | 1.600 | - |
| XP-L | 106+29 deg | Oval | 94 % | 0.830 | - |
| XP-L2 | 100+30 deg | Oval | 94 % | 0.800 | - |
| LUXEON C | sim: 14+88 | Oval | sim: 93 % | sim: 1.460 | - |
| NCSxx19A | 87+15 deg | Oval | 95 % | 1.500 | - |
| NCSxx19B | 95+17 deg | Oval | 94 % | 1.500 | - |
| Oslon Square EC | 90+20 deg | Oval | 94 % | 1.250 | - |
| Oslon SSL 80 | 81+13 deg | Oval | 93 % | 2.000 | - |
| Oslon SSL 150 | 108+12 deg | Oval | 93 % | 1.600 | - |



D

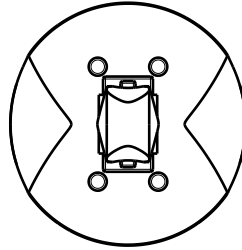
C

B

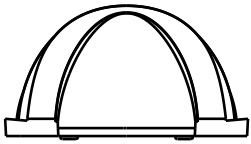
A

4

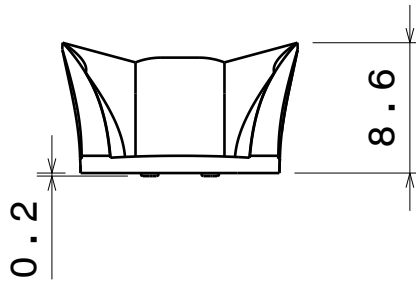
4



Bottom view



Right view



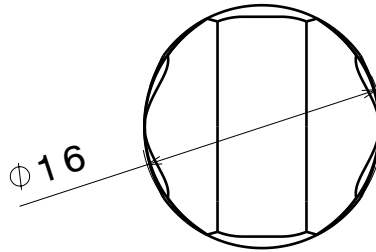
Front view

3

3

2

2



Top view

This drawing is our property.
It can't be reproduced
or communicated without
our written agreement.



Ledil Oy
Salorankatu 10
FIN 24240 SALO
Finland

DRAWING TITLE

Datasheet FLARE-MINI

DRAWN BY

as

DATE

1.8.2012

CHECKED BY

sn

DATE

1.8.2012

DESIGNED BY

pl

DATE

27.2.2012

SIZE

A4

PART NUMBER

SCALE

2:1

WEIGHT

REV

001

SHEET

1/1

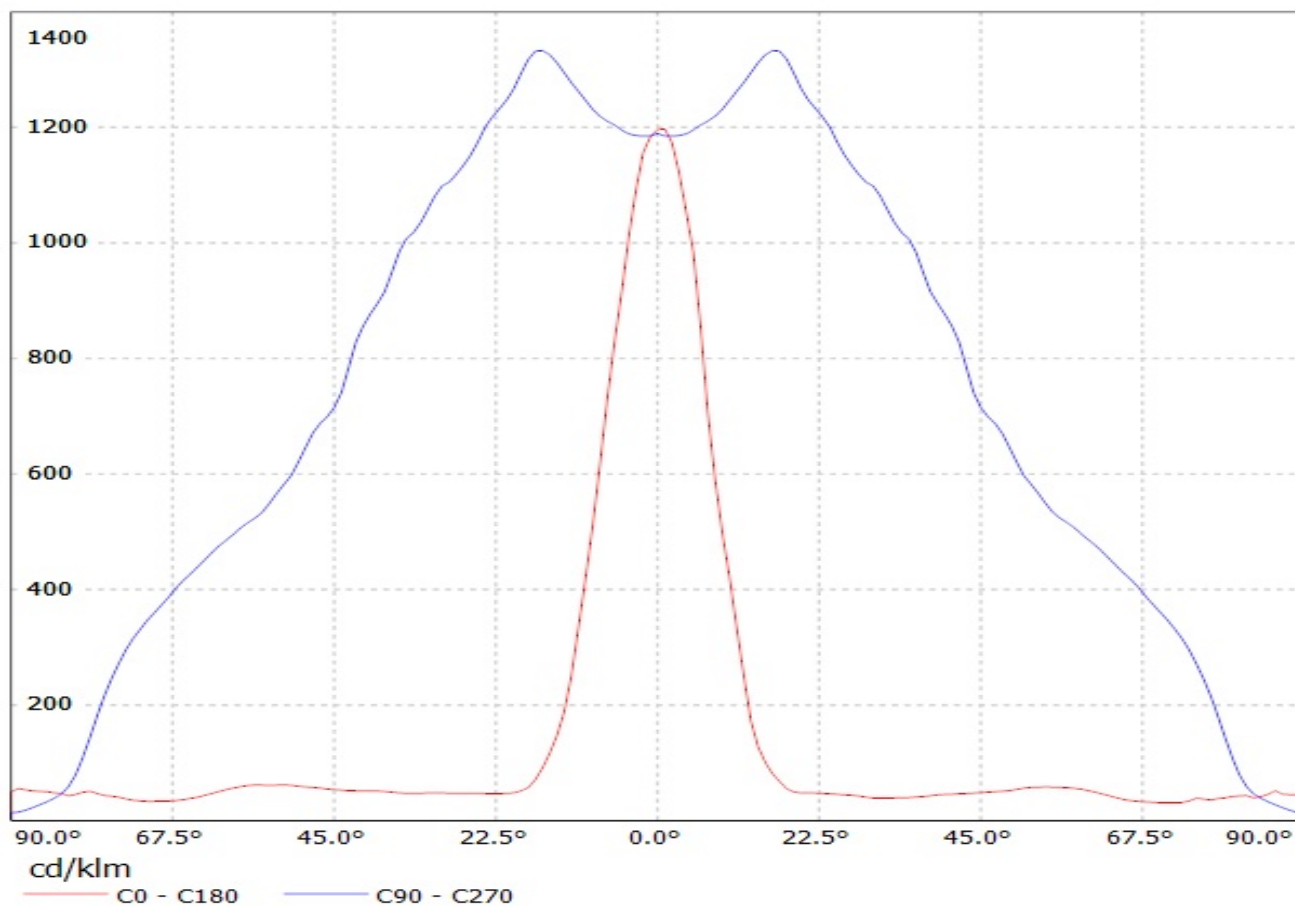
1

1

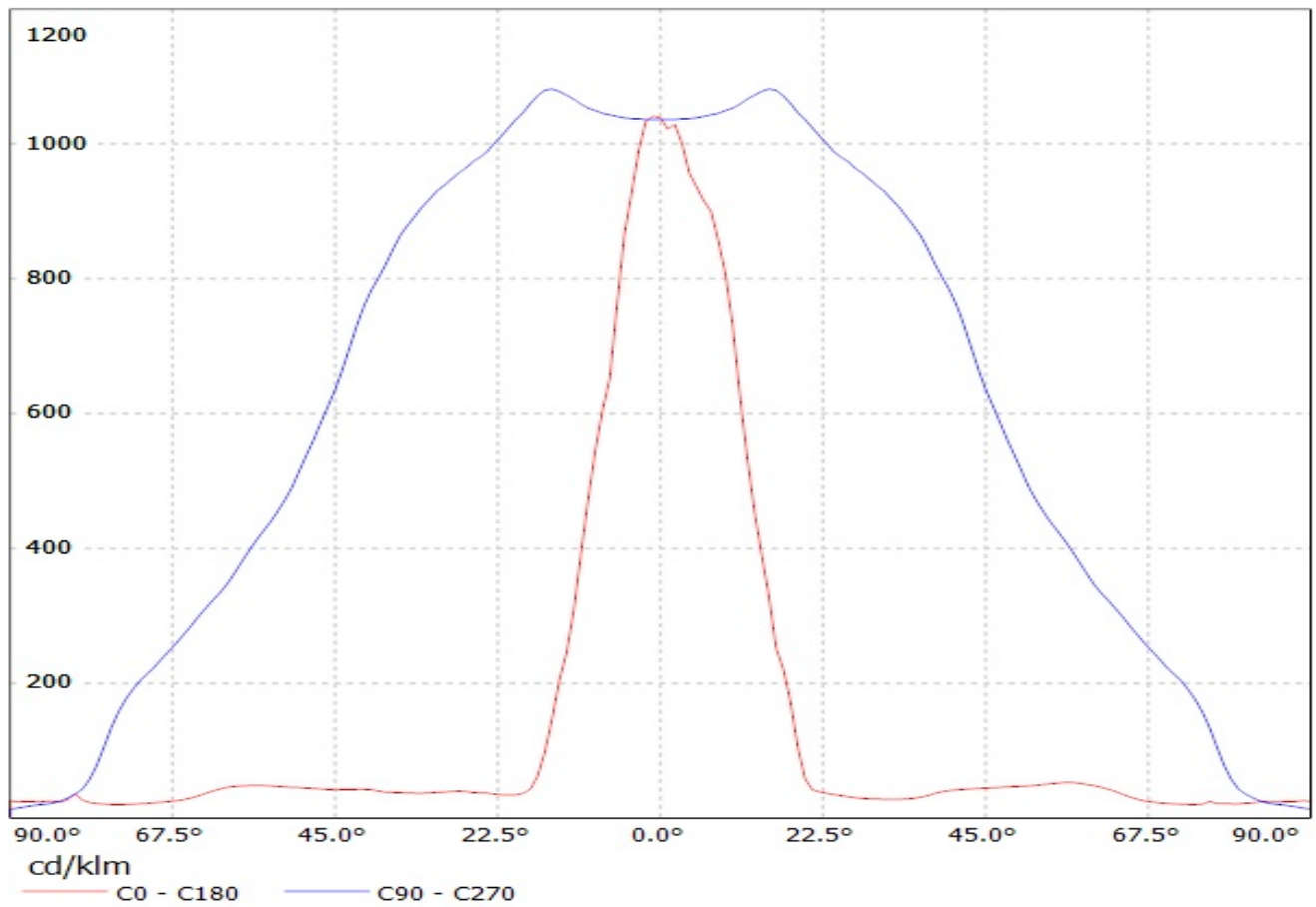
D

A

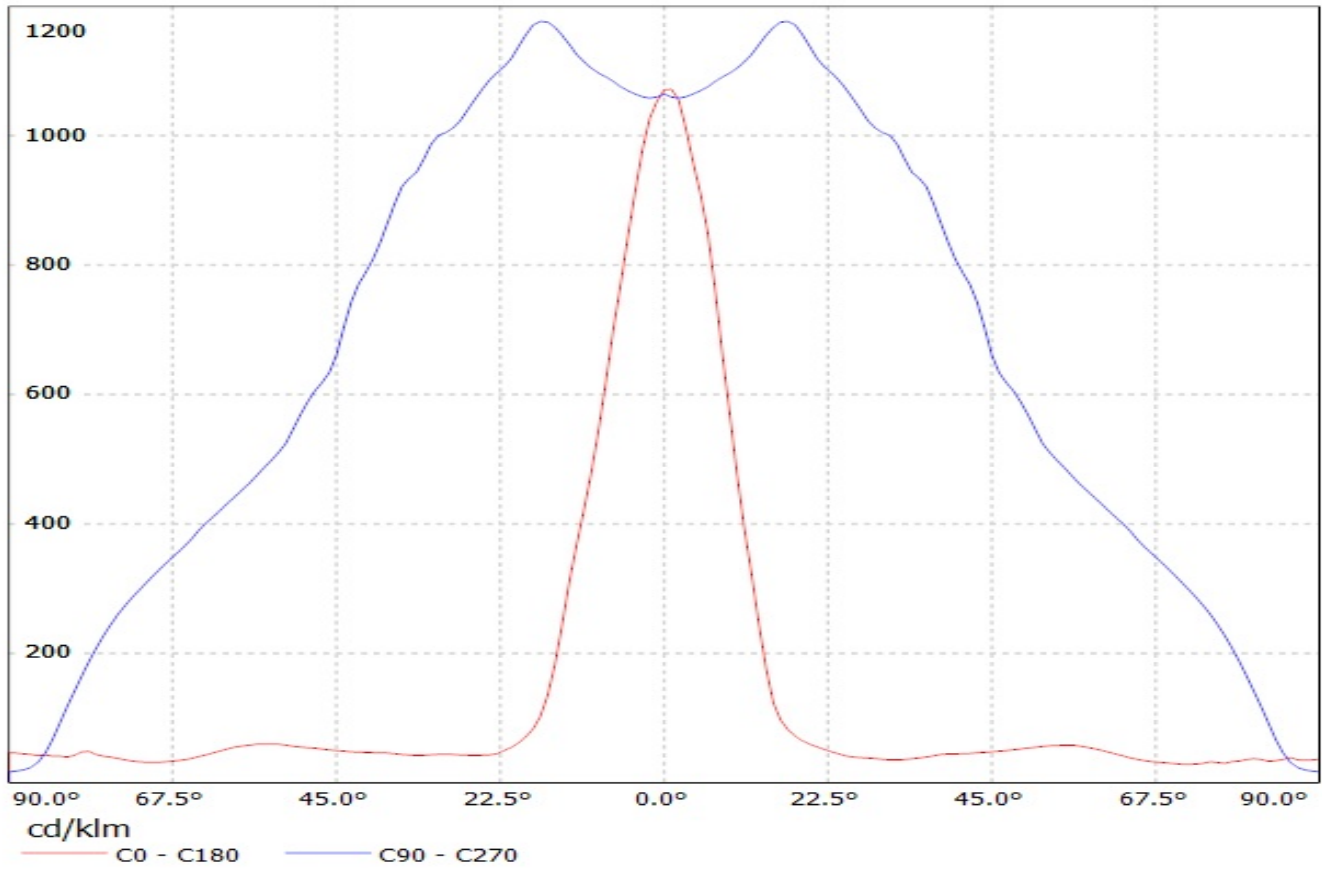
Luminaire: LEDIL OY C12763 & C12837_FLARE-MINI-A (XB-D) Efficiency=95%
Lamps: 1 x Cree XB-D white (97lm @ 250mA)



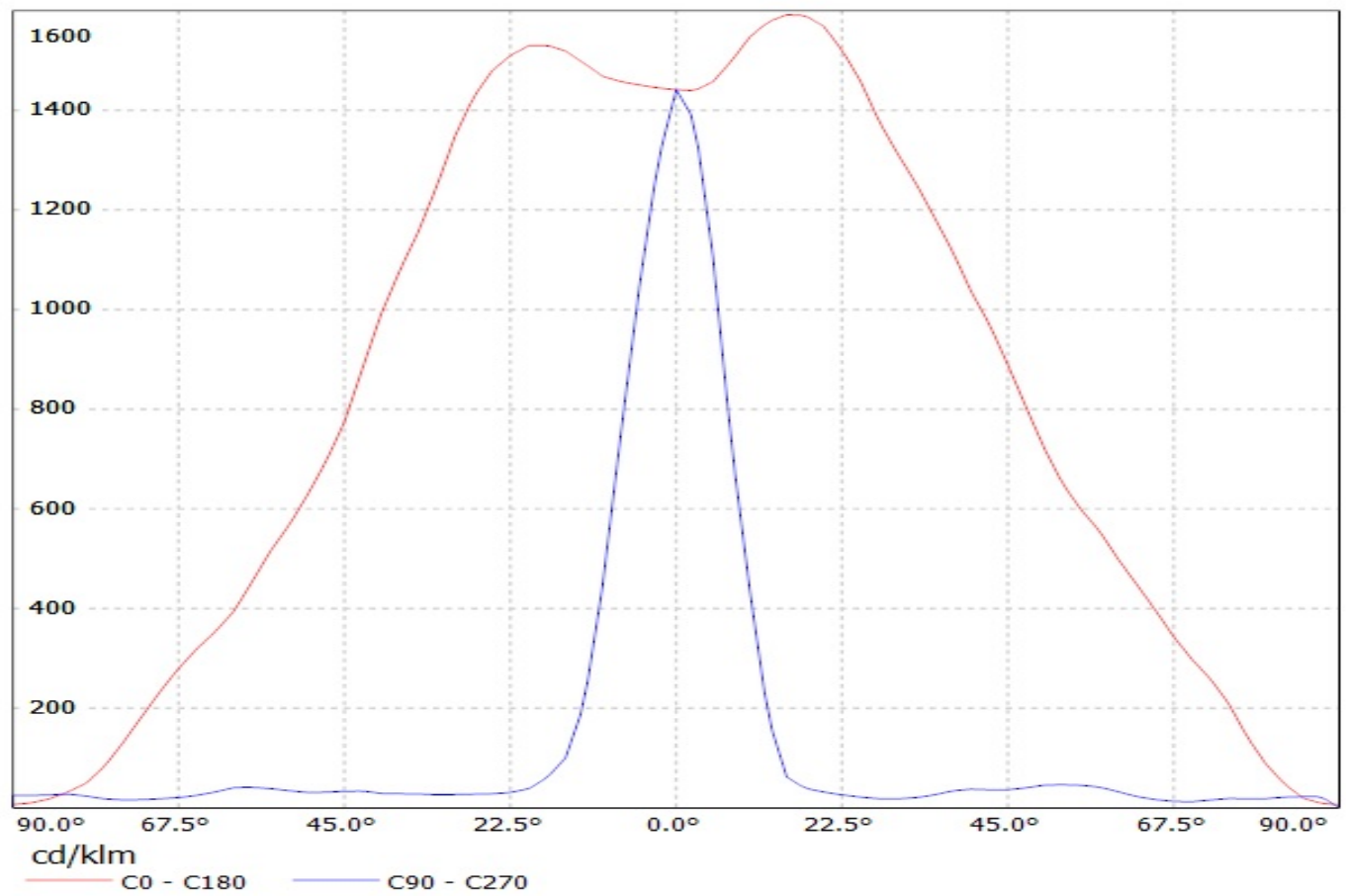
Luminaire: LEDIL OY C12763 & C12837 FLARE-MINI-A (XP-G) Efficiency=95%
Lamps: 1 x Cree XP-G (92lm@250mA)



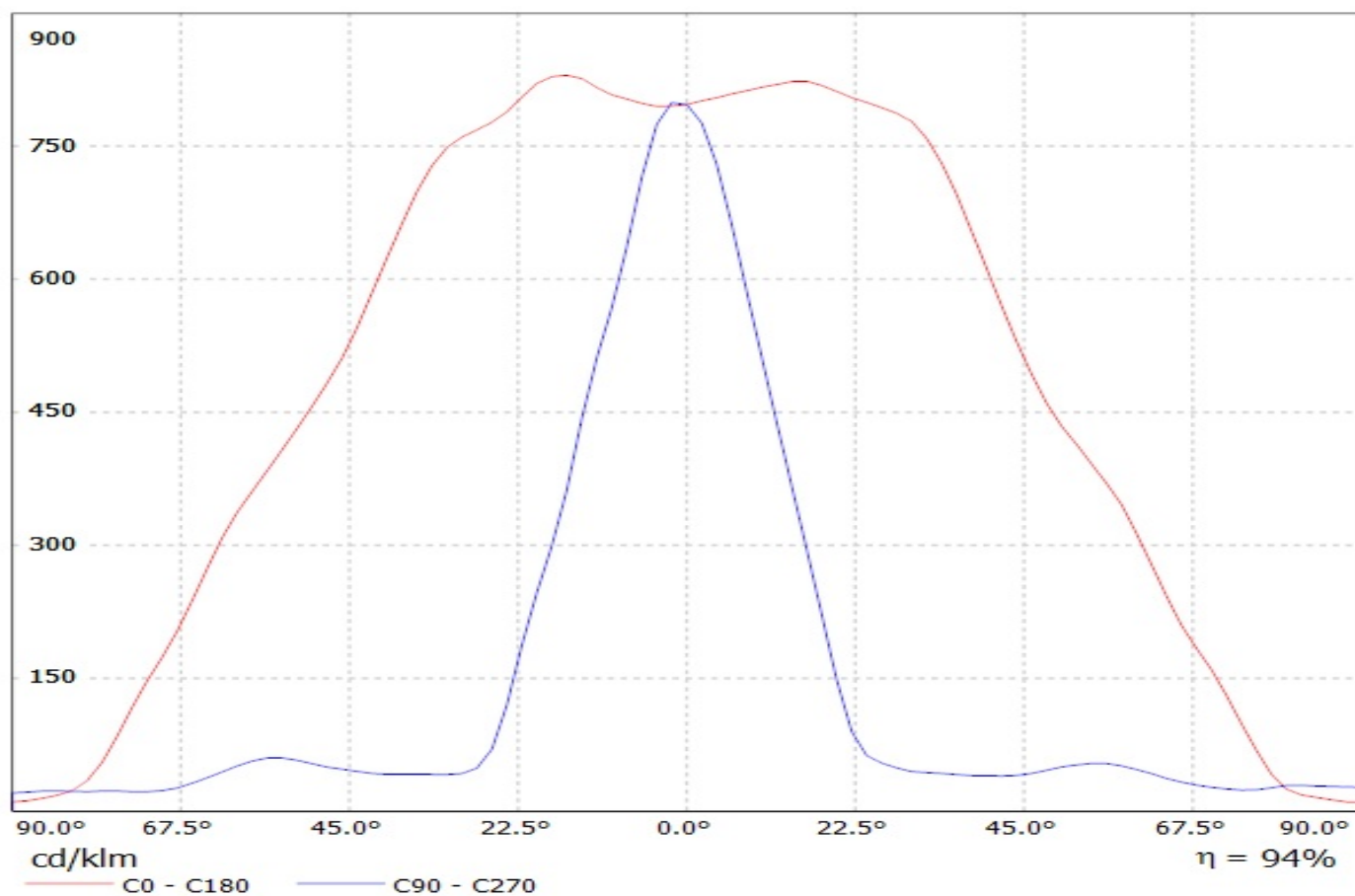
Luminaire: LEDIL OY C12763 & C12837_FLARE-MINI-A (XT-E AWT) Efficiency=94%
Lamps: 1 x Cree XT-E AWT (108lm@250mA)



Luminaire: Ledil Oy C12763_FLARE-MINI-A (CREE XP-E2 (92 lm @ 250 mA)) Efficiency=94%
Lamps: 1 x CREE XP-E2 (92 lm @ 250 mA)

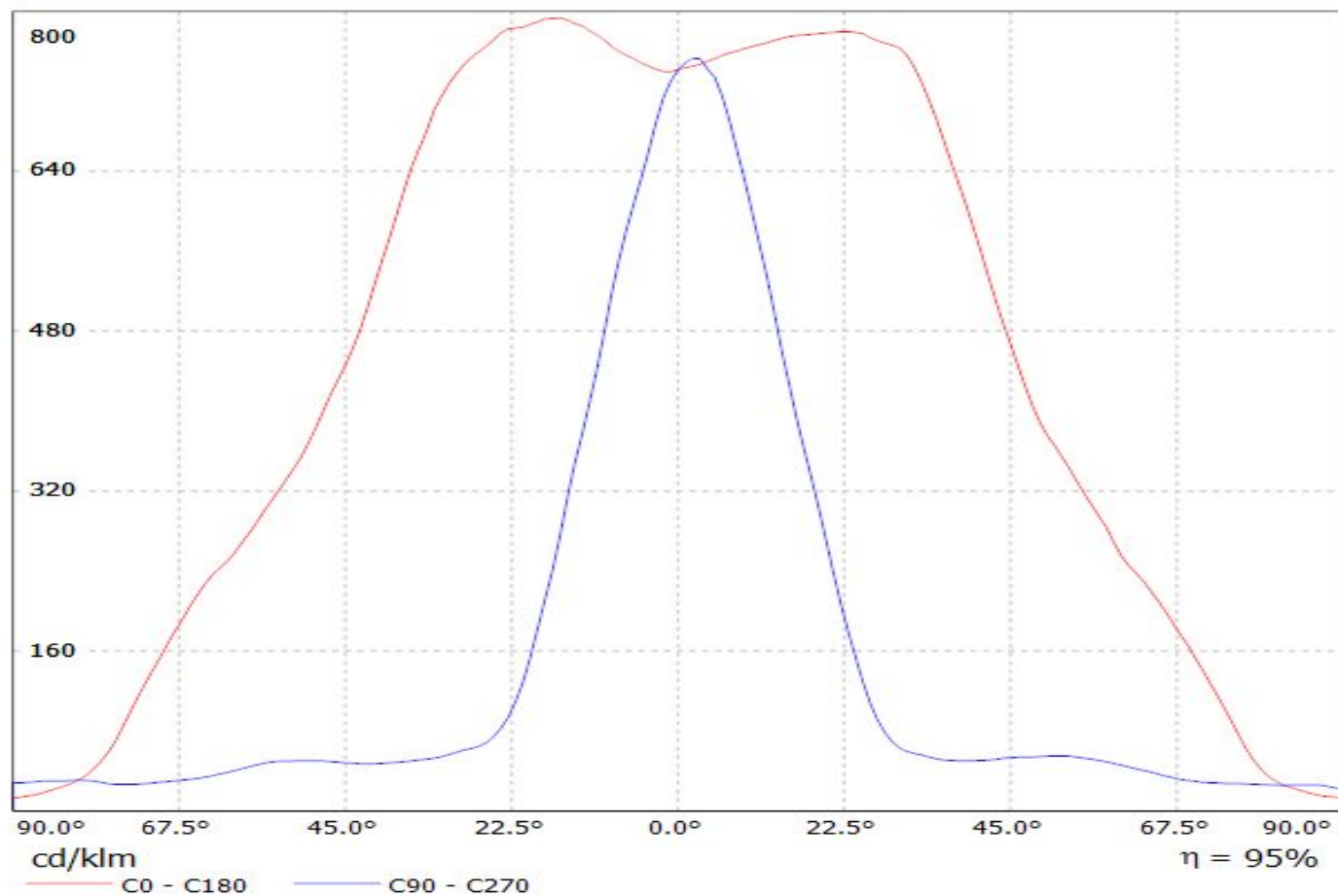


Luminaire: LEDil Oy C12763_FLARE-MINI-A_(XP-L)
Lamps: 1 x Cree XP-L (125 lm @ 250mA) P=0.7W I=250mA

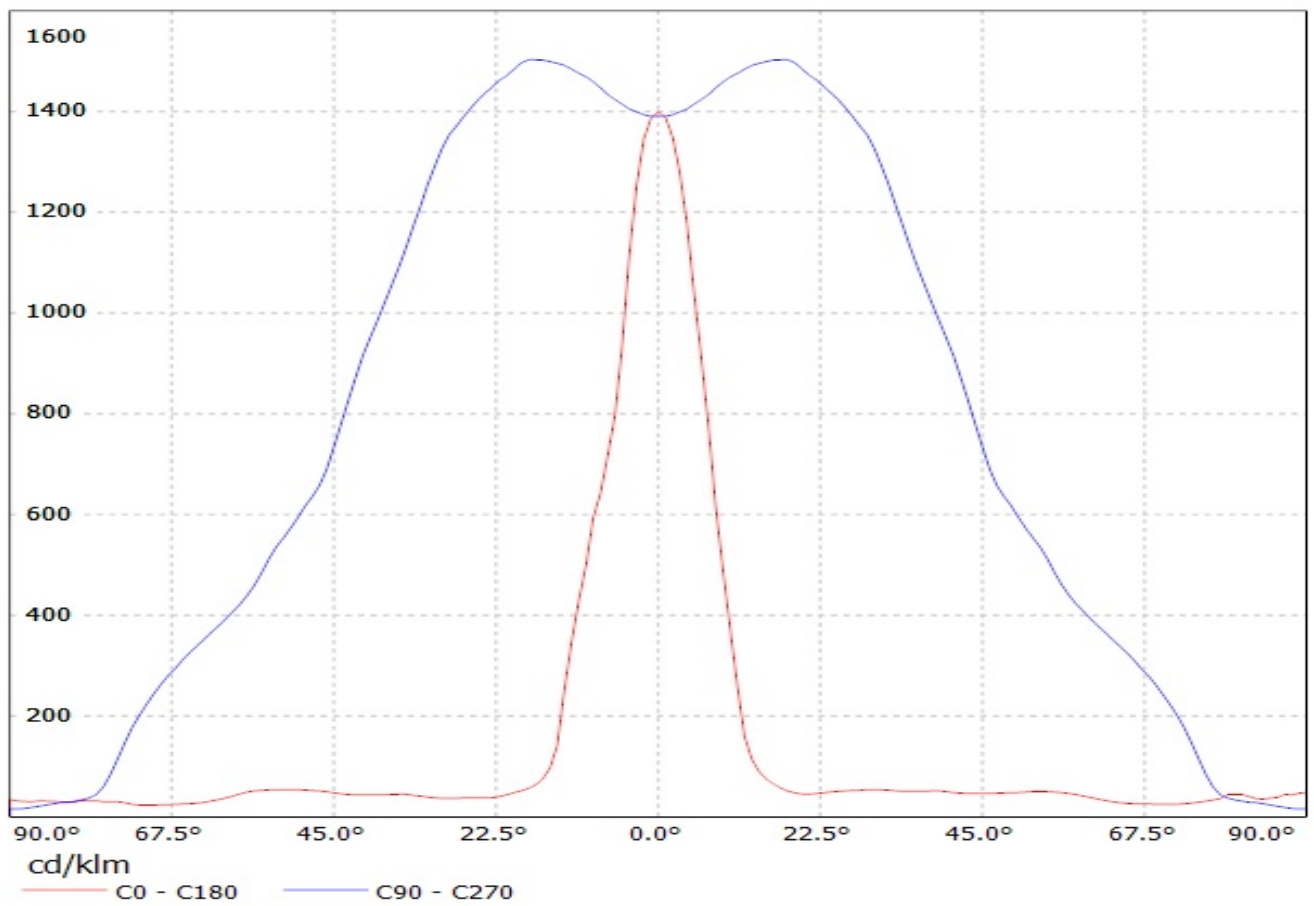


Luminaire: Ledil C12763_FLARE-MINI-A_(XP-L2)

Lamps: 1 x Cree_XP-L2_(XPLWT-00-0000-000HU630G)_115.505lm@250mA_P=0.72165W_I=0.25A

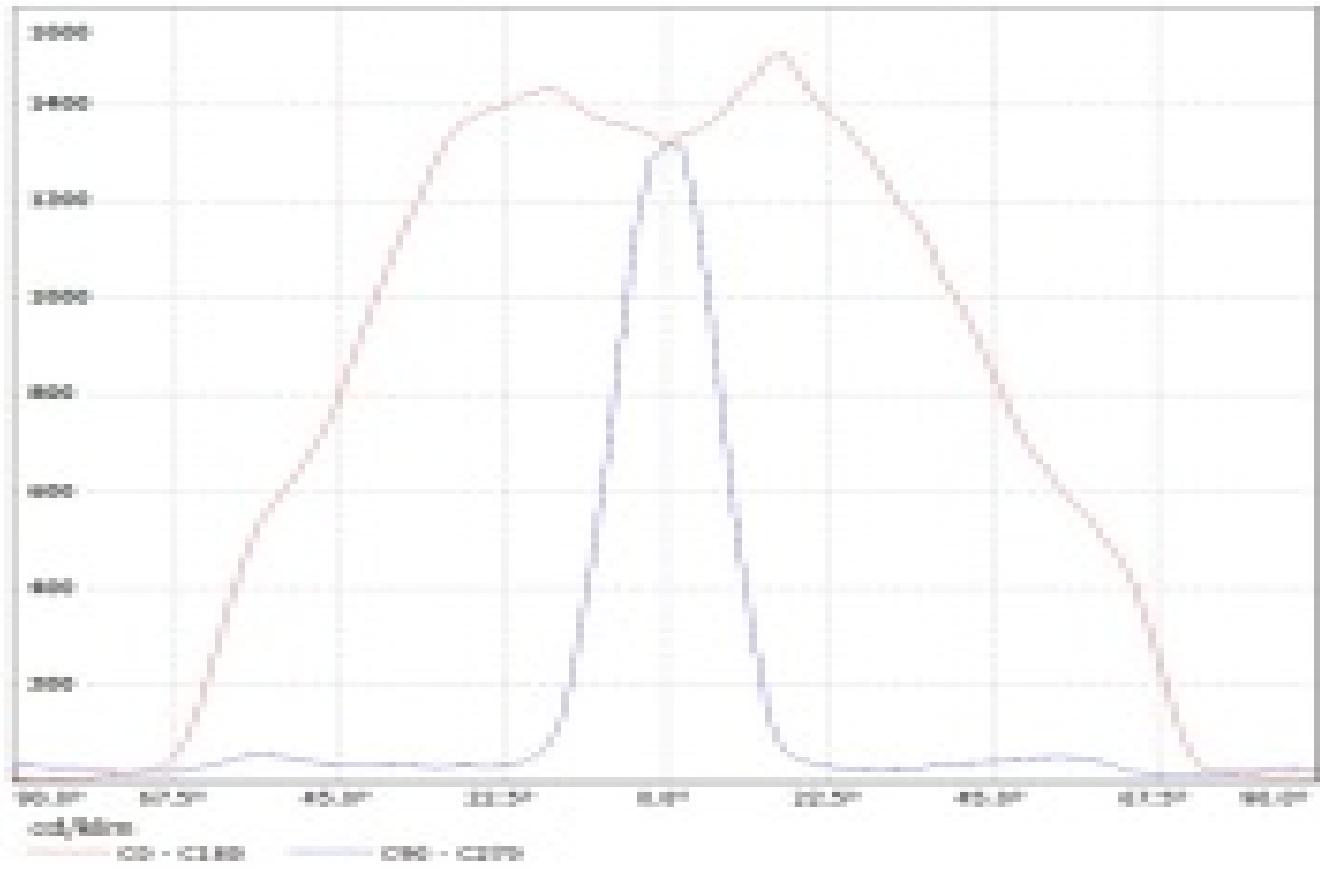


Luminaire: LEDIL OY C12763 & C12837_FLARE-MINI-A (NCS19) Efficiency=95%
Lamps: 1 x Nichia NCS19 (95lm@250mA)

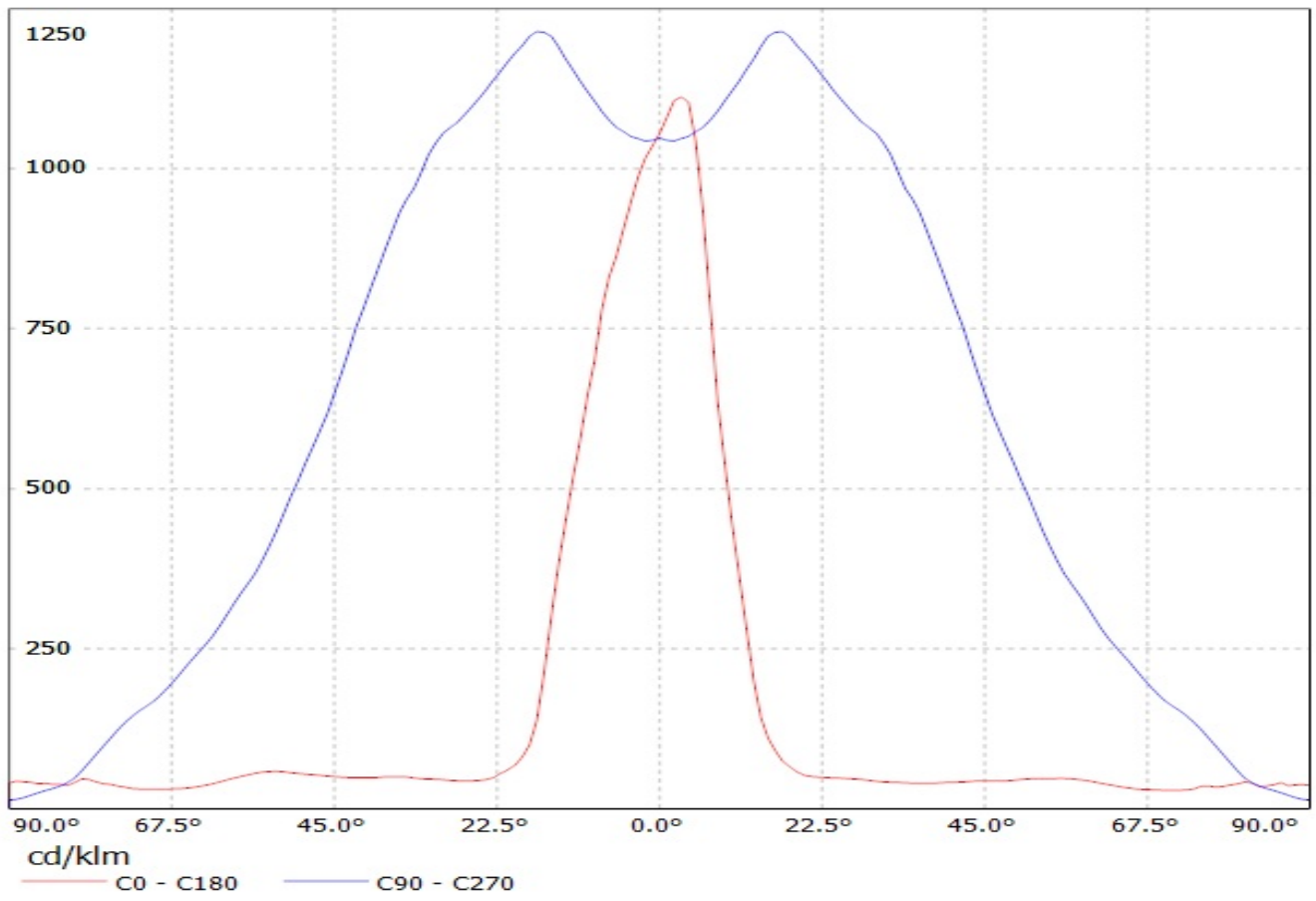


Luminaire: Ledli-Cy-CARDISS_Plane-Mini-A-Plus_2x120x150 (Efficiency=100%)

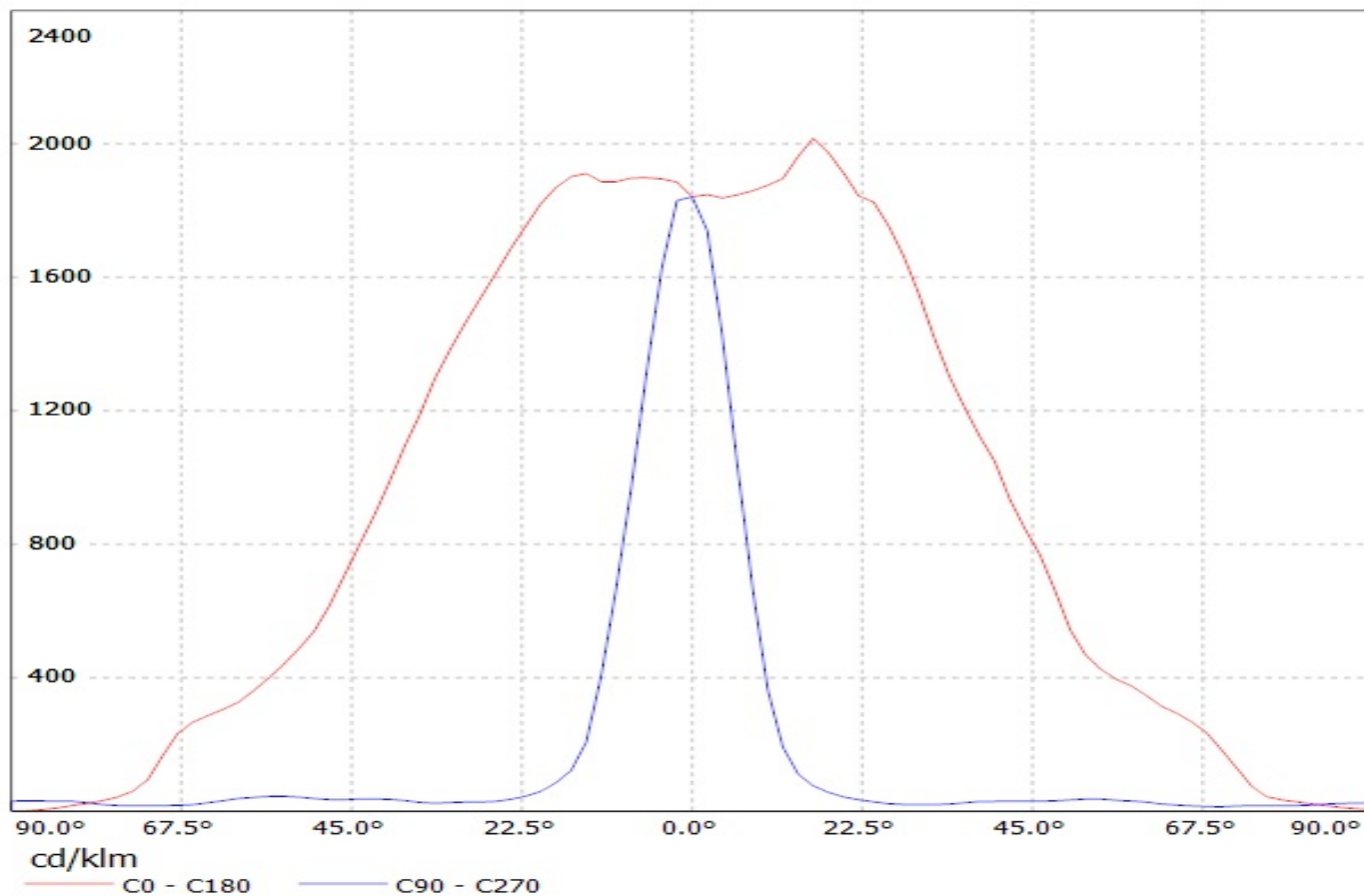
Lamp: 1 x Nichia NSC2000T06 (Wavelength=460nm @ 200mA-DCT=3000K) P=0.8W @ I=200mA



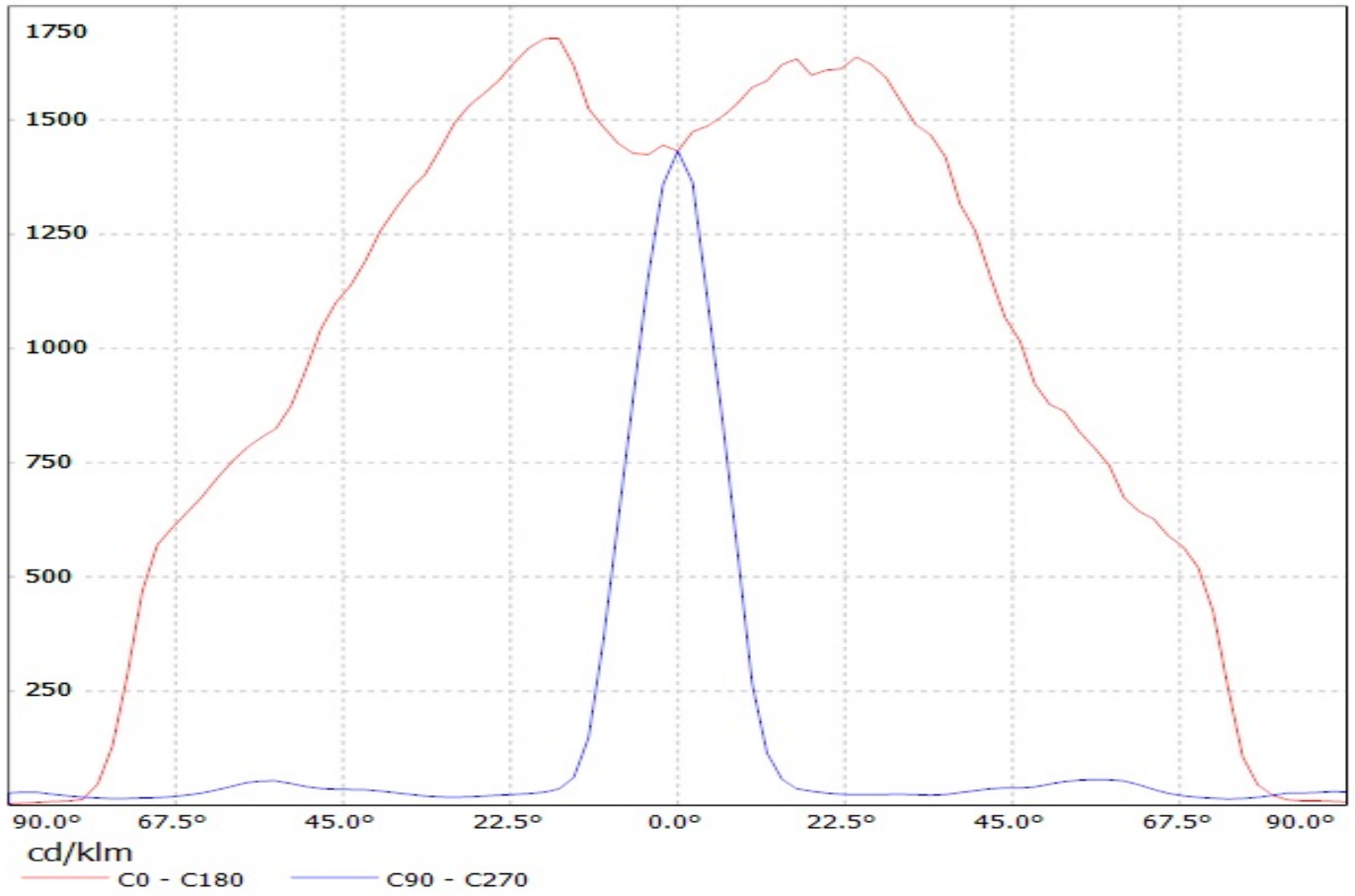
Luminaire: LEDIL OY C12763 & C12837_FLARE-MINI-A (SQ EC) Efficiency=94%
Lamps: 1 x Osram Oslon Square EC (69lm@250mA)



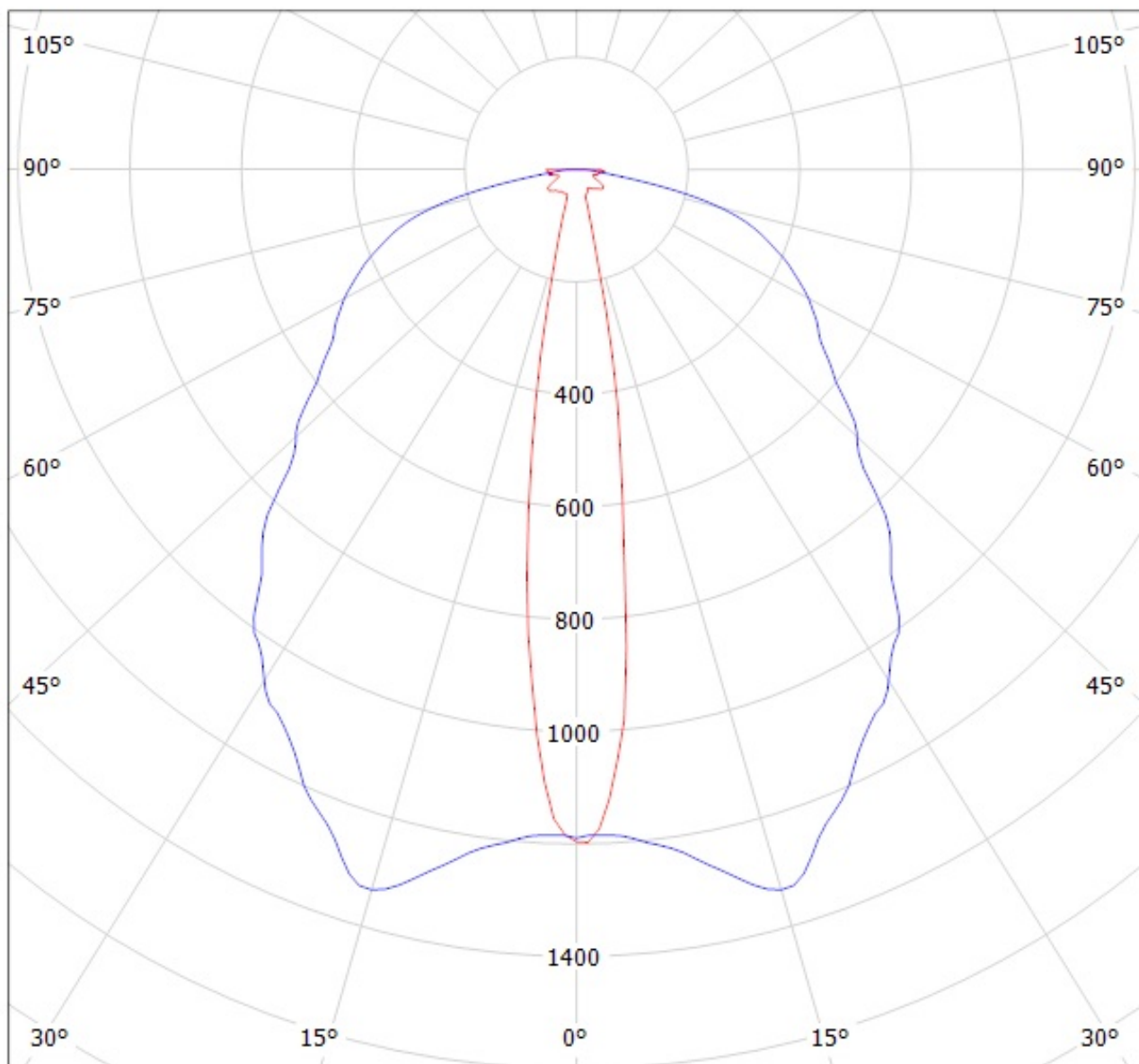
Luminaire: Ledil Oy C12763/C12837_FLARE-MINI-A (Osram OSL80 84lm @ 250mA) Efficiency=93%
Lamps: 1 x Osram OSL80 84lm @ 250mA



Luminaire: Ledil Oy C12763/C12837_FLARE-MINI-A (Osram OSL150 95lm @ 250mA) Efficiency=93%
Lamps: 1 x Osram OSL150 95lm @ 250mA



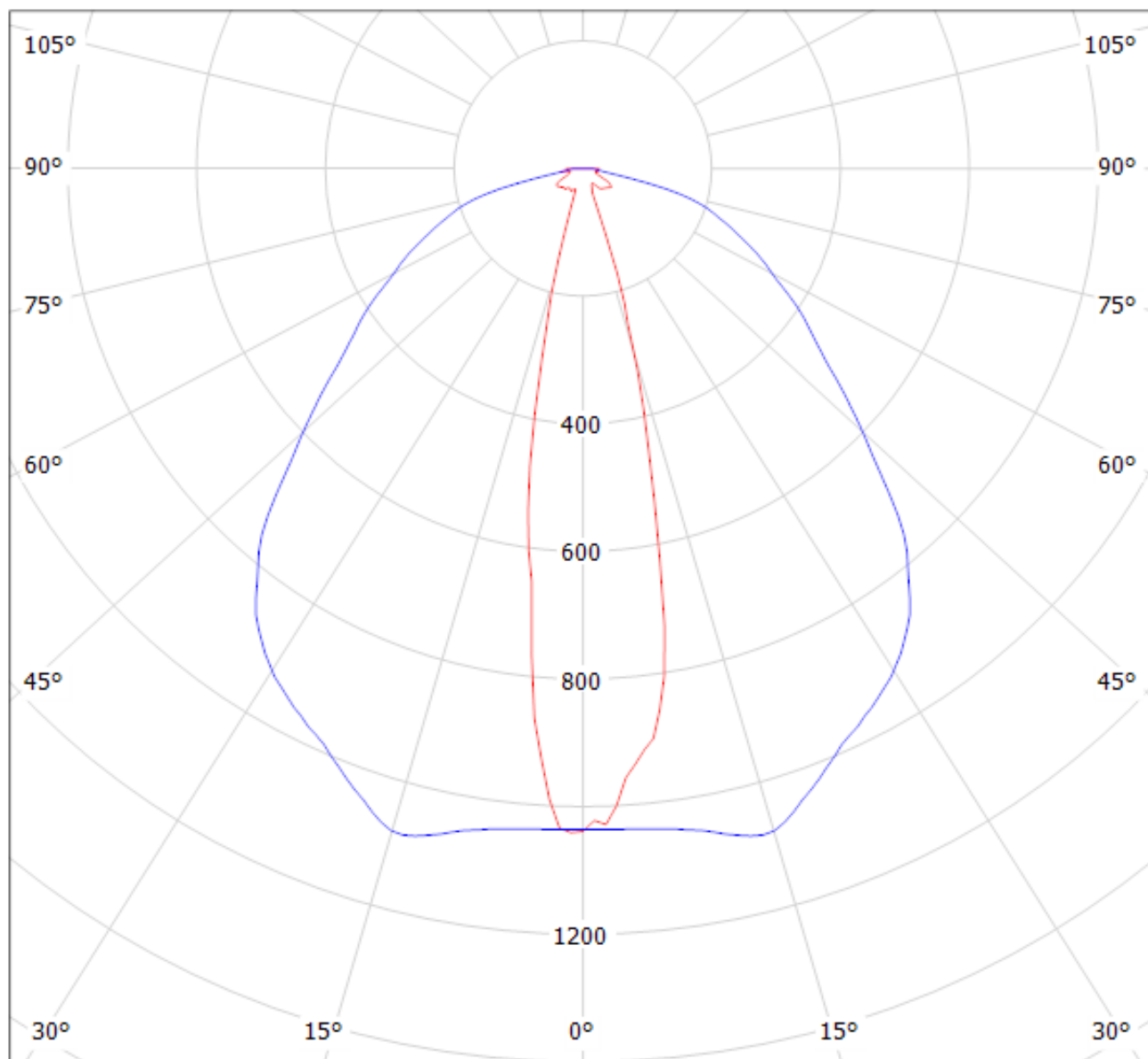
Luminaire: LEDIL OY C12763 & C12837_FLARE-MINI-A (XB-D) Efficiency=95%
Lamps: 1 x Cree XB-D white (97lm @ 250mA)



cd/klm

— C0 - C180 — C90 - C270

Luminaire: LEDIL OY C12763 & C12837 FLARE-MINI-A (XP-G) Efficiency=95%
Lamps: 1 x Cree XP-G (92lm@250mA)

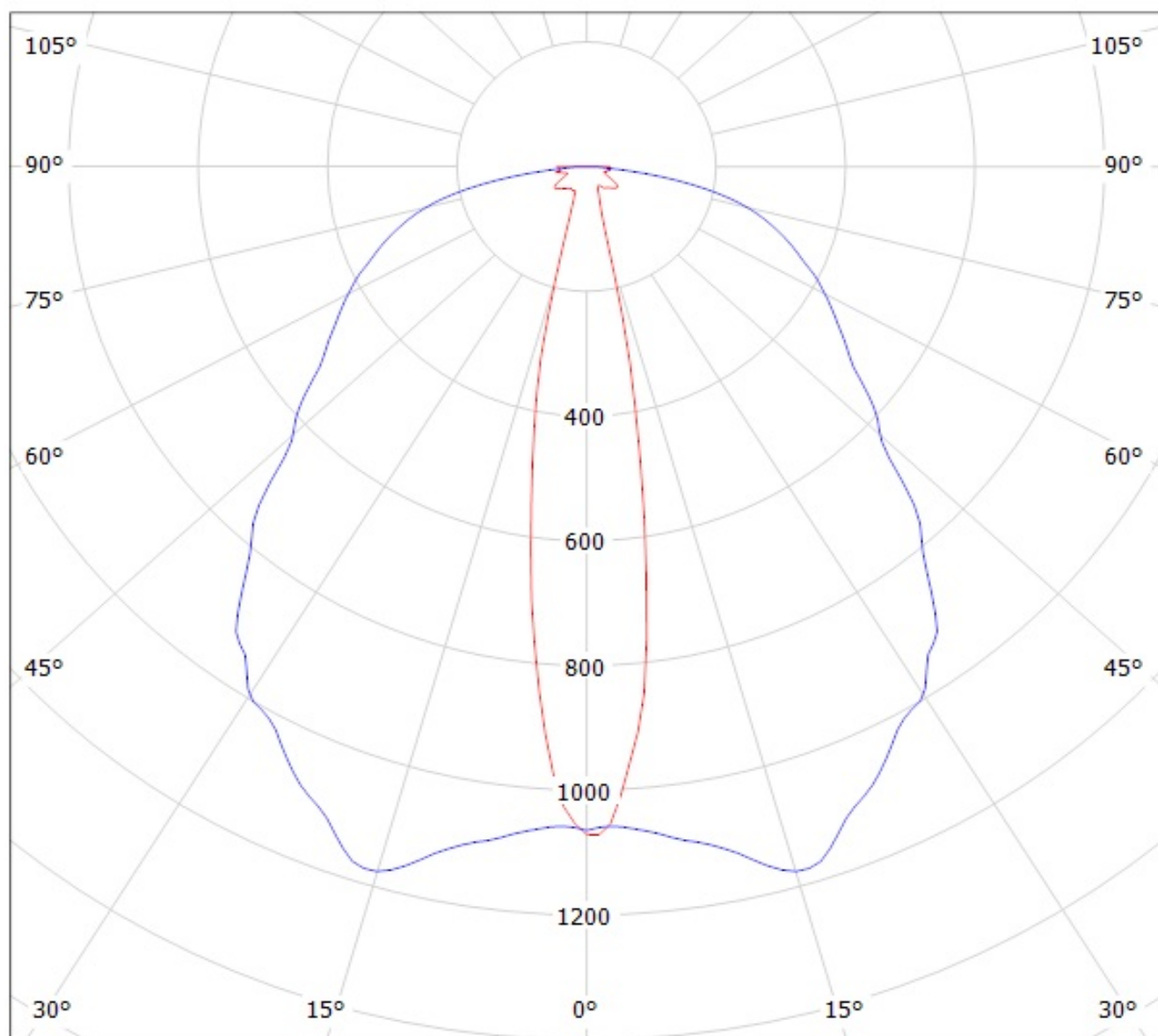


cd/klm

— C0 - C180

— C90 - C270

Luminaire: LEDIL OY C12763 & C12837_FLARE-MINI-A (XT-E AWT) Efficiency=94%
Lamps: 1 x Cree XT-E AWT (108lm@250mA)

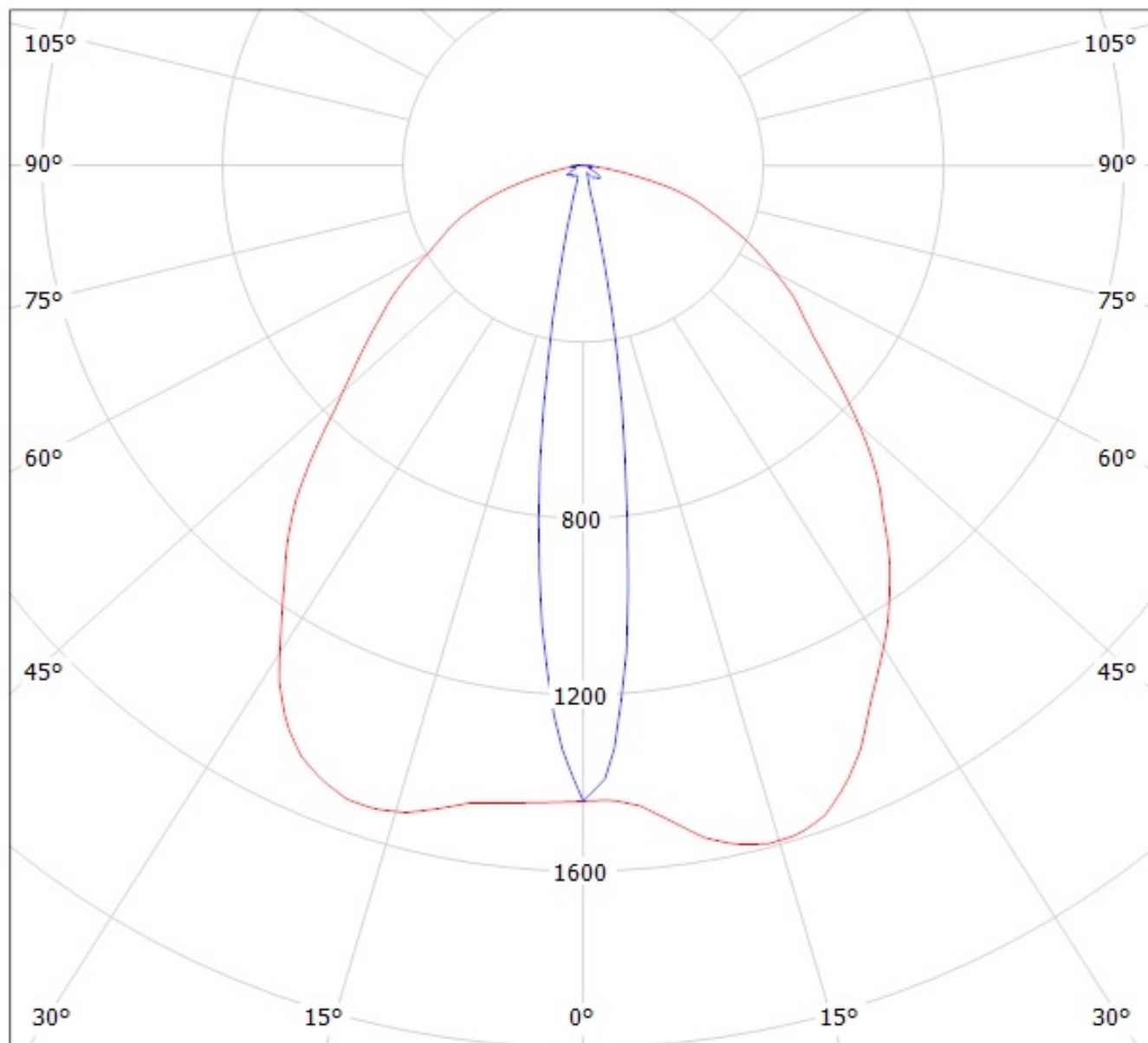


cd/klm

— C0 - C180

— C90 - C270

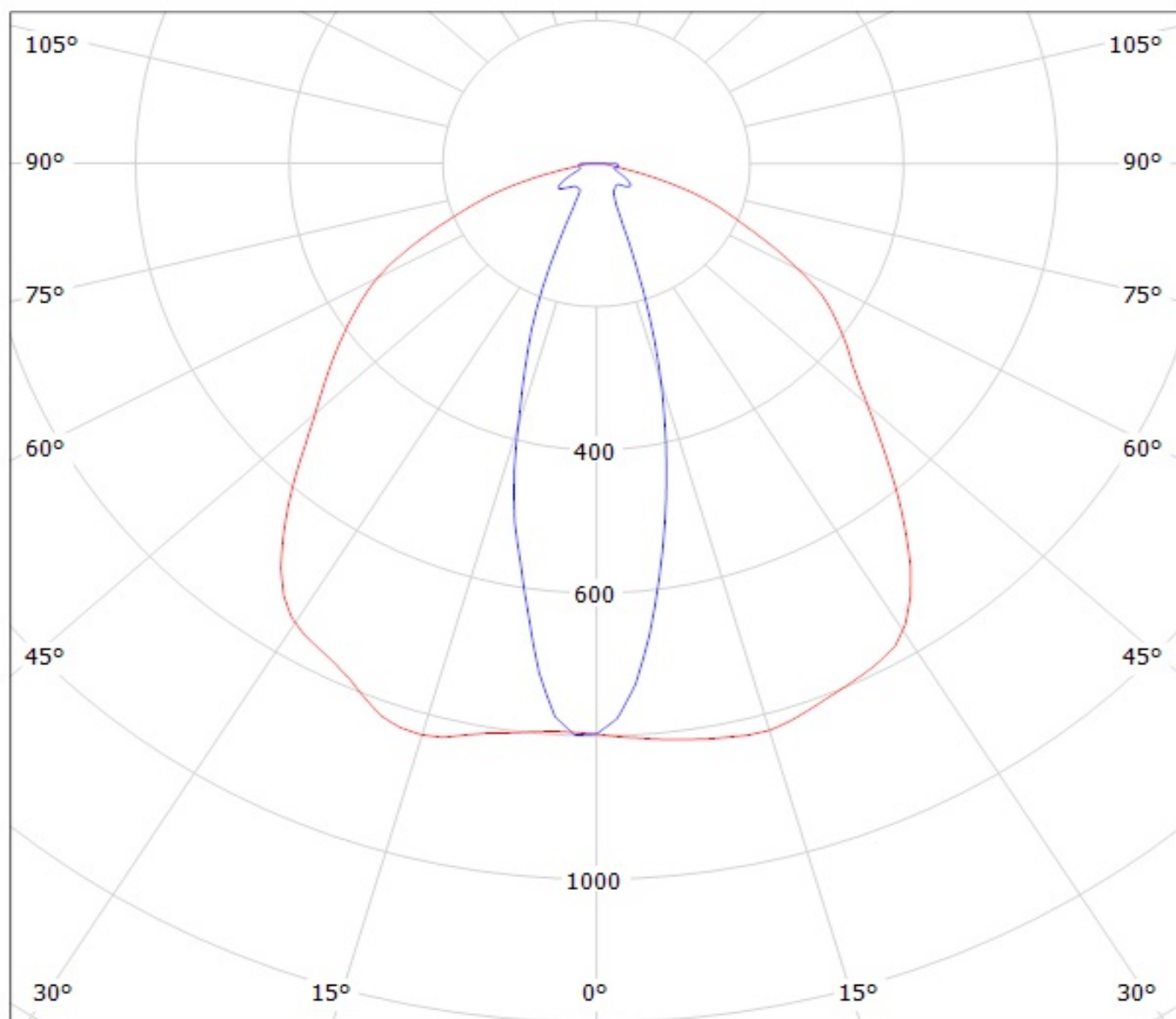
Luminaire: Ledil Oy C12763_FLARE-MINI-A (CREE XP-E2 (92 lm @ 250 mA)) Efficiency=94%
Lamps: 1 x CREE XP-E2 (92 lm @ 250 mA)



cd/klm

— C0 - C180 — C90 - C270

Luminaire: LEDil Oy C12763_FLARE-MINI-A_(XP-L)
Lamps: 1 x Cree XP-L (125 lm @ 250mA) P=0.7W I=250mA



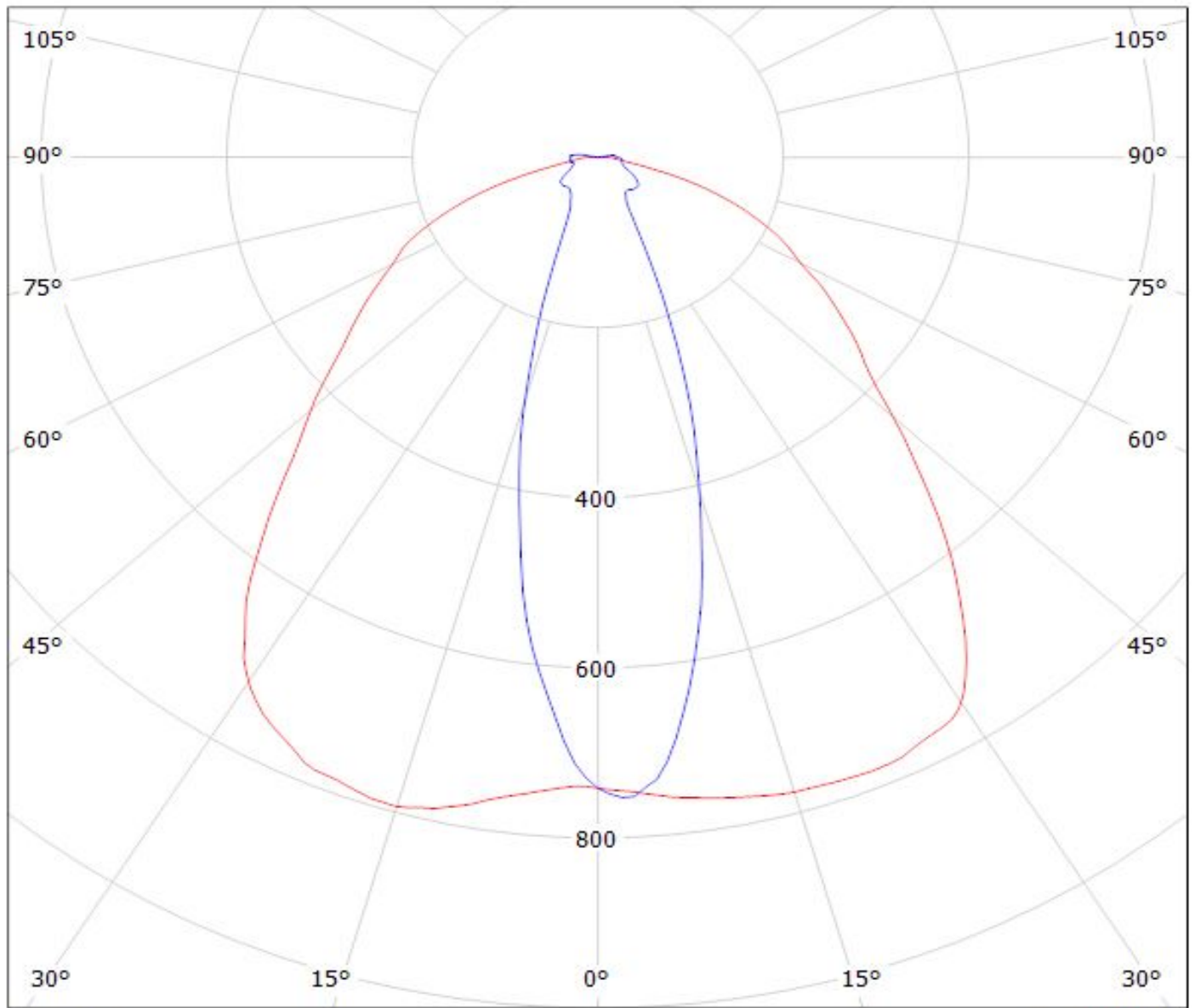
cd/klm

— C0 - C180 — C90 - C270

$\eta = 94\%$

Luminaire: Ledil C12763_FLARE-MINI-A_(XP-L2)

Lamps: 1 x Cree_XP-L2_(XPLWT-00-0000-000HU630G)_115.505lm@250mA_P=0.72165W_I=0.25A

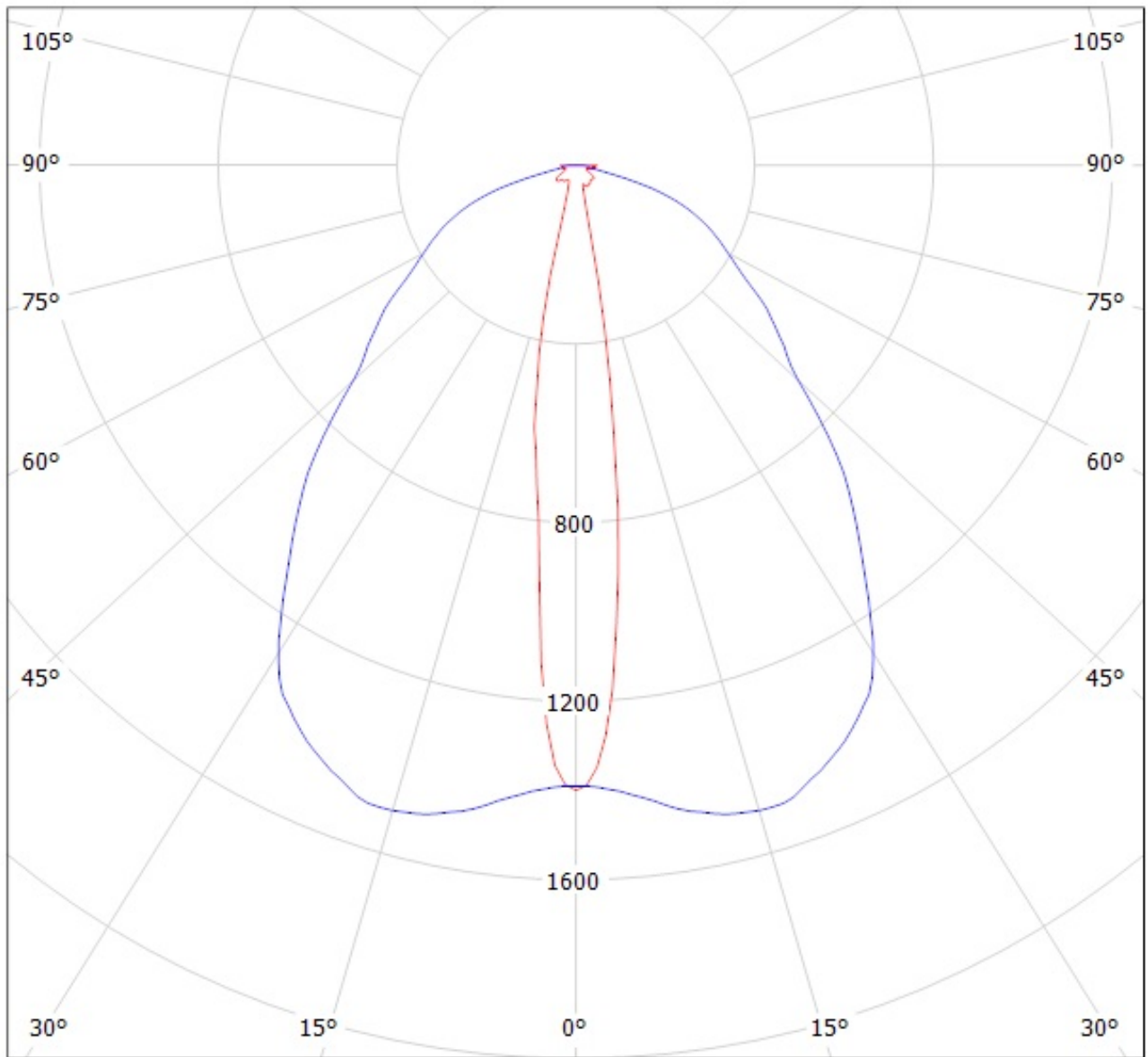


cd/klm

— C0 - C180 — C90 - C270

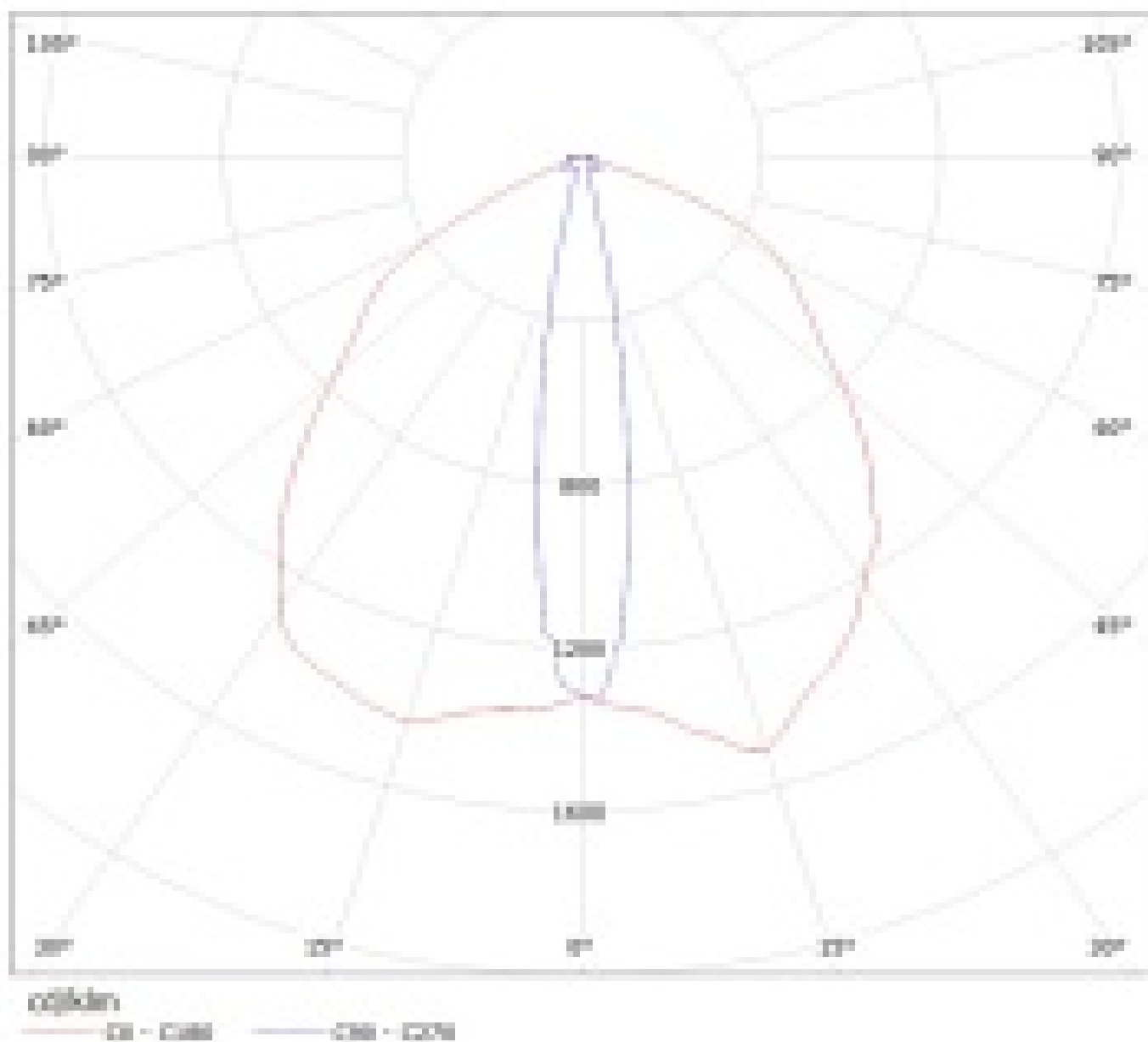
$\eta = 95\%$

Luminaire: LEDIL OY C12763 & C12837_FLARE-MINI-A (NCS19) Efficiency=95%
Lamps: 1 x Nichia NCS19 (95lm@250mA)

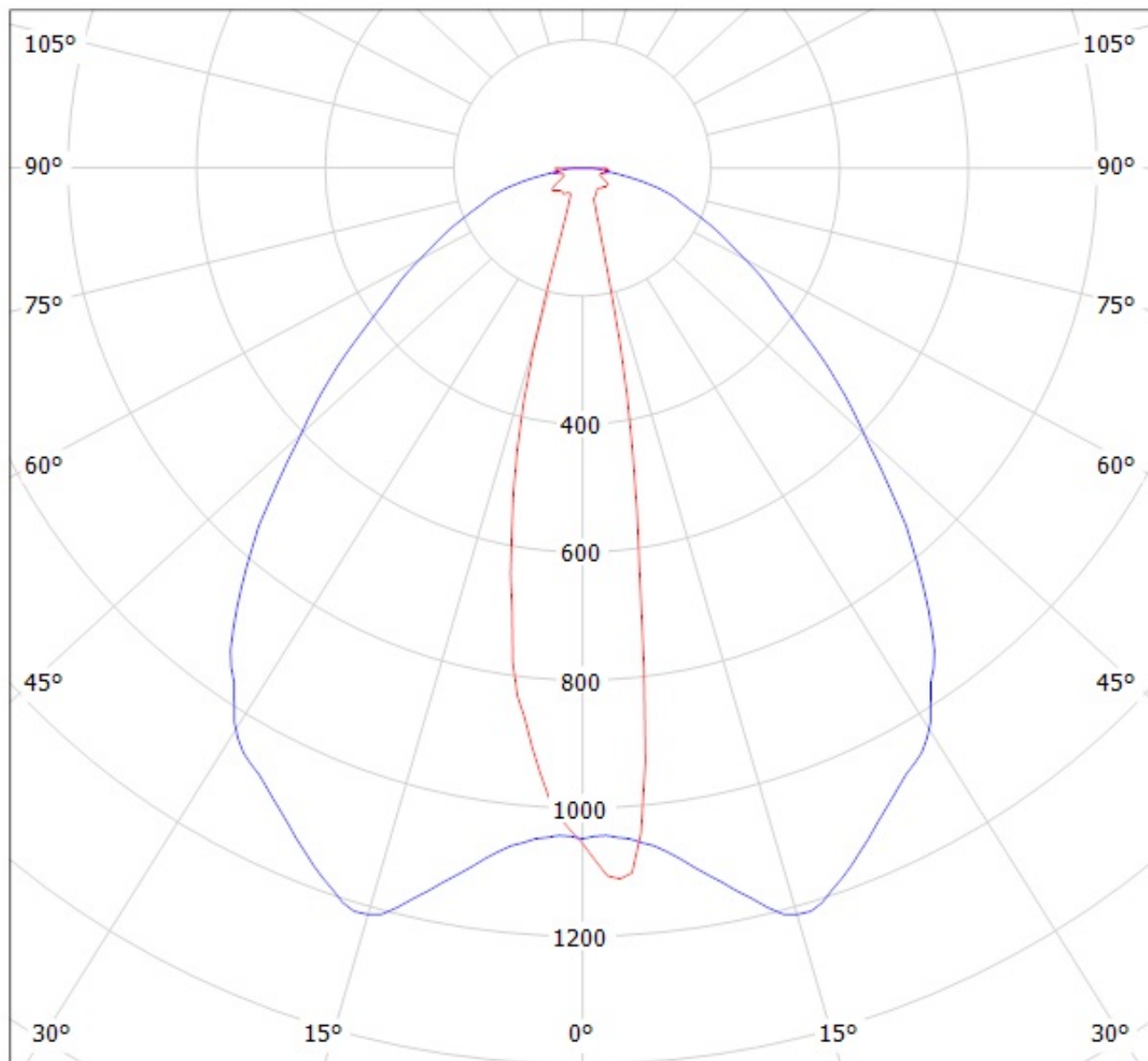


cd/klm
— C0 - C180 — C90 - C270

Luminaire: Ledli Qy C40000 (Flux-Mini-A-Pol) (Aktiviteti) Efficiency:147%
Lamp: 1 x Nichia NSD5015 (405L-FRDE) 50mm Ø; 220mA CCT=5000K P=0.947W=25lm/led



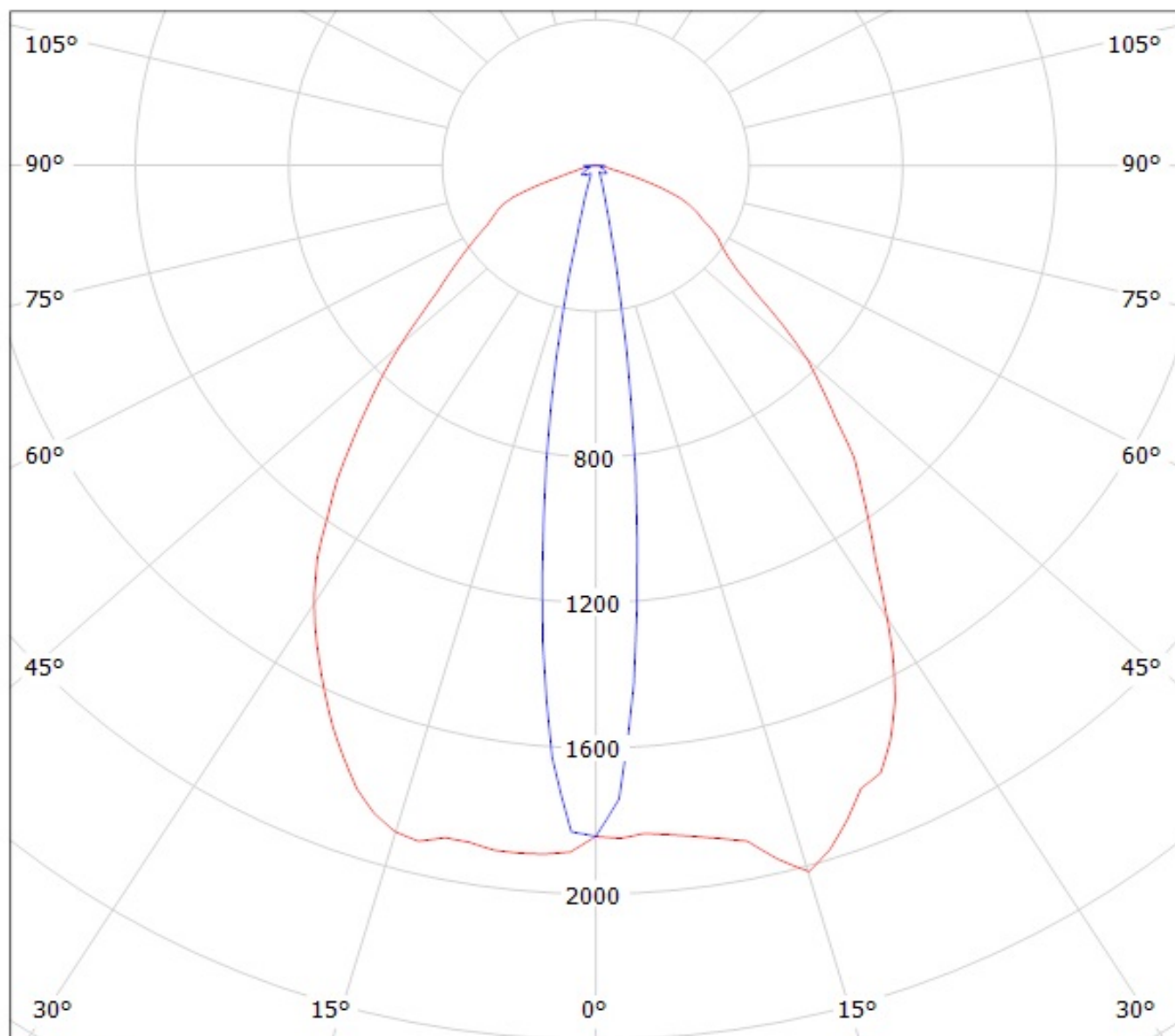
Luminaire: LEDIL OY C12763 & C12837_FLARE-MINI-A (SQ EC) Efficiency=94%
Lamps: 1 x Osram Oslon Square EC (69lm@250mA)



cd/klm

— C0 - C180 — C90 - C270

Luminaire: Ledil Oy C12763/C12837_FLARE-MINI-A (Osram OSL80 84lm @ 250mA) Efficiency=93%
Lamps: 1 x Osram OSL80 84lm @ 250mA

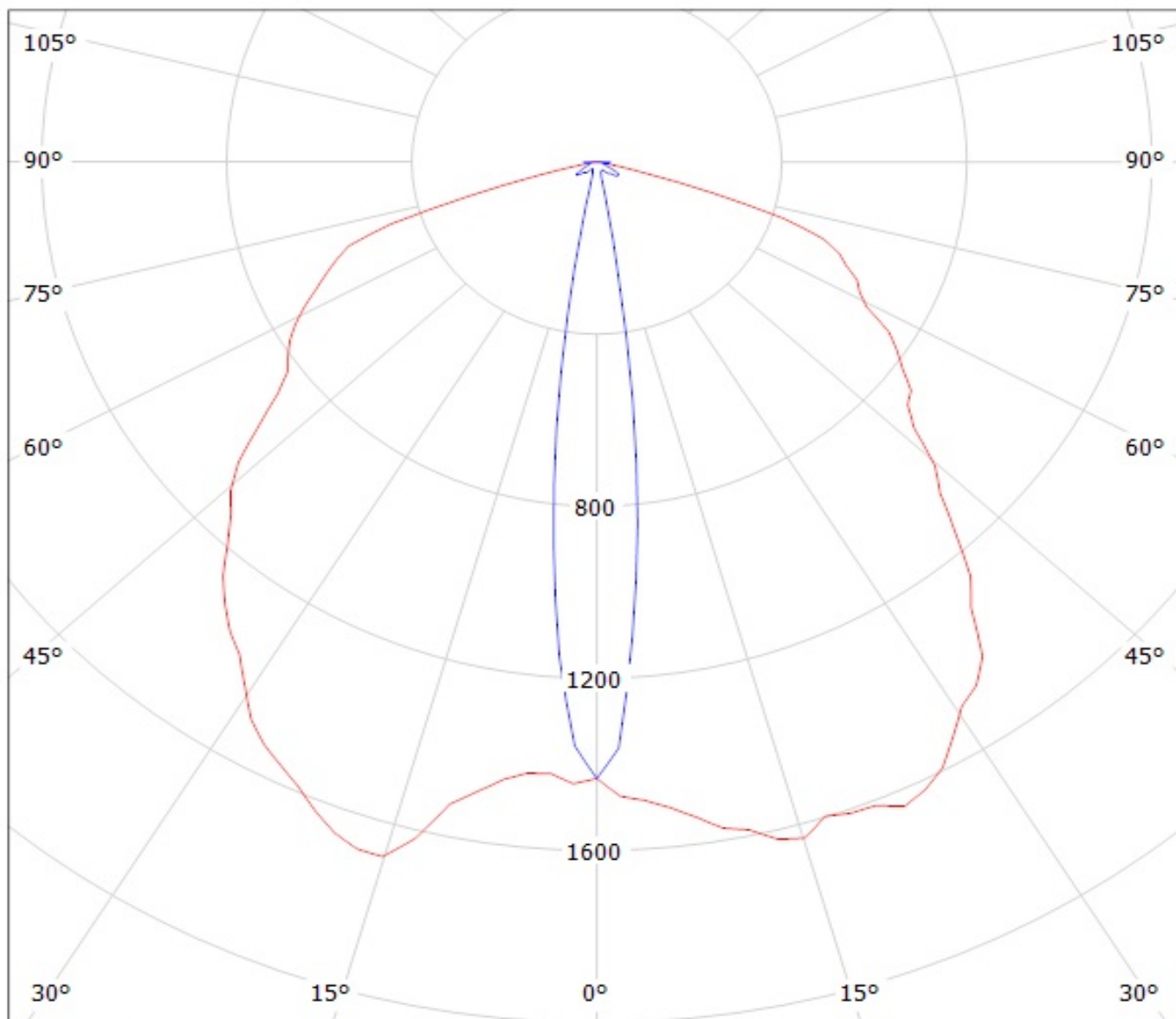


cd/klm

— C0 - C180

— C90 - C270

Luminaire: Ledil Oy C12763/C12837_FLARE-MINI-A (Osram OSL150 95lm @ 250mA) Efficiency=93%
Lamps: 1 x Osram OSL150 95lm @ 250mA



cd/klm

— C0 - C180

— C90 - C270

NOTE: The typical divergence will be changed by different color, chip size and chip position tolerance. The typical total divergence is the full angle measured where the luminous intensity is half of the peak value.